



**Vincent<sup>®</sup>**  
TOOLS FOR QUARTZ INDUSTRIES

**SURFACES GROUP**

YOUR PARTNER  
IN **GLASS INDUSTRY**  
Tools & Solutions

 **Surfaces Group**  
Absolute finishing

**GLASS**

# more brands one group



Filiali dirette  
Direct subsidiaries

10

Settori chiave  
Key sectors

5

Siti produttivi  
Production sites

12

Dipendenti  
Employees

900

Paesi serviti  
Countries served

70



IL GRUPPO  
THE GROUP



Surfaces Group è leader italiano nel mondo per la produzione di soluzioni integrate per tutte le lavorazioni di finiture di ceramica, pietra, marmo, vetro, agglomerati, anticipando le tendenze future e offrendo soluzioni complete grazie alla sinergia di marchi di eccellenza che rappresentano il meglio del Made in Italy:

Surfaces Technological Abrasives, ADI, NoCoat, International Chips, Luna Abrasiv, RBM e Vincent.

#### **MADE IN ITALY**

Knowhow tecnologico, alta qualità delle materie prime e innovazione al servizio al cliente.

#### **PRESENZA INTERNAZIONALE**

Operiamo direttamente per essere autentici partner.

#### **TECNOLOGIA E INNOVAZIONE**

Studio di nuove soluzioni anticipando le esigenze di un mercato in continua evoluzione.

#### **SOLUZIONI TAILOR-MADE**

Eccellenti finiture su ogni tipologia di materiale studiate su misura grazie ad una ricerca costante.

*Surfaces Group is Italian leader worldwide in the production of integrated solutions in finishing processes for ceramics, glass, stone, engineered stone, keeping ahead of future trends and offering complete solutions, thanks to the synergy of brands of excellence representing the best of Italian output: Surfaces Technological Abrasives, ADI, NoCoat, International Chips, Luna Abrasiv, RBM, Vincent.*

#### **MADE IN ITALY**

*Technological know-how, high quality raw materials and innovation to our customers service.*

#### **INTERNATIONAL PRESENCE**

*We operate directly enabling us to be an authentic partner.*

#### **TECHNOLOGY AND INNOVATION**

*The research of new solutions, anticipating the needs of a continuous evolving market.*

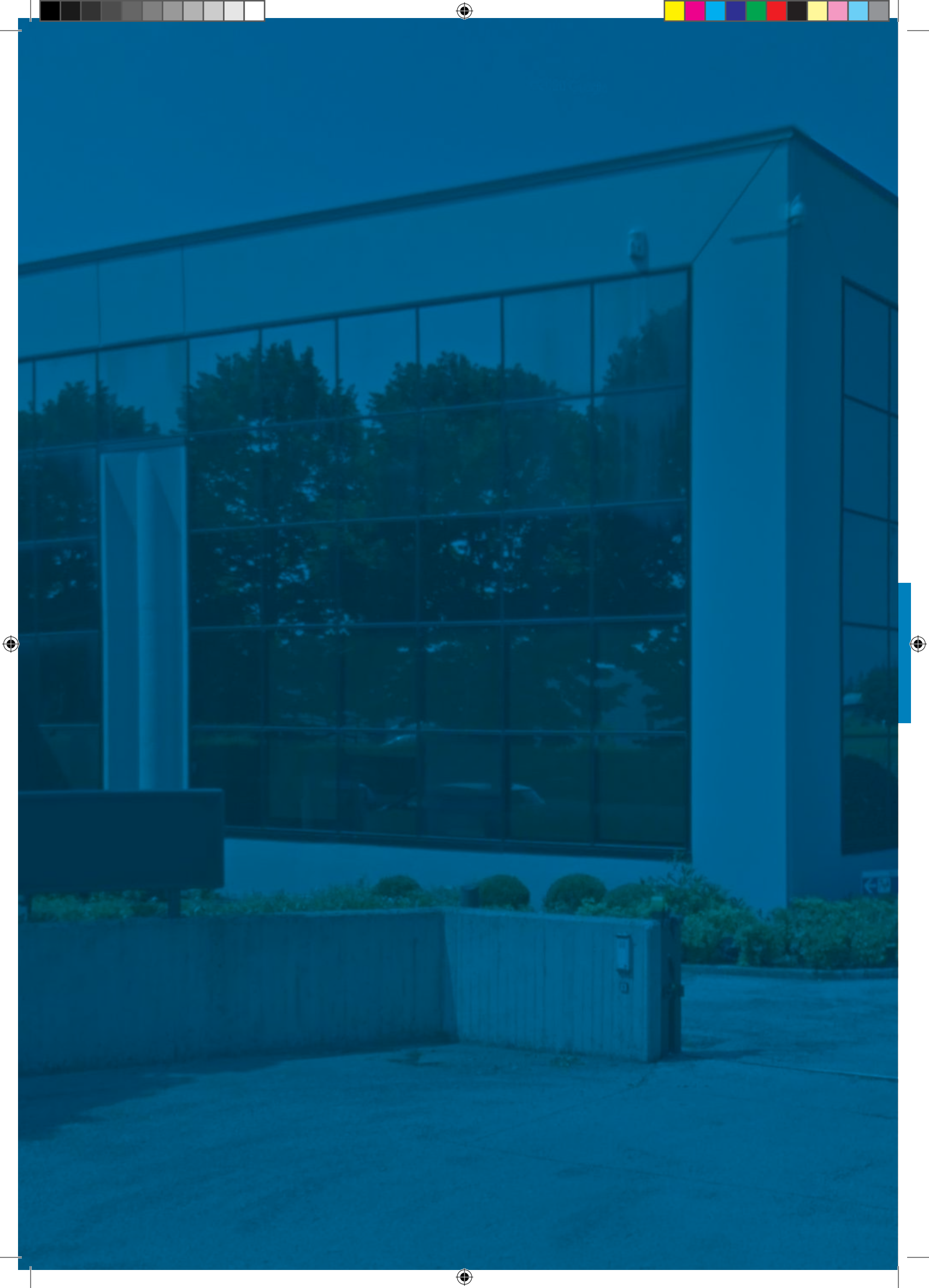
#### **TAILOR-MADE SOLUTIONS**

*Excellent finishes for any type of material, tailor-made thanks to constant research.*

TECNOLOGIA ITALIANA  
INNOVAZIONE  
KNOW-HOW  
RICERCA  
ESPERIENZA  
PRESENZA MONDIALE  
SOLUZIONI PERSONALIZZATE

ITALIAN TECHNOLOGY  
INNOVATION  
KNOW-HOW  
RESEARCH  
EXPERIENCE  
WORLDWIDE PRESENCE  
CUSTOM SOLUTIONS

ceramics | glass | natural stone | engineered stone | stone fabricators | mechanics







IL BRAND  
THE BRAND



Dal 1974 VINCENT produce utensili diamantati per il taglio, la molatura e la levigatura di pietra naturale, agglomerato, vetro e piastrelle in ceramica.

La nostra organizzazione, che comprende siti produttivi in Italia e in Asia, conta attualmente oltre 300 risorse altamente qualificate e una presenza commerciale in oltre 70 paesi, servendo più di 1400 clienti in tutto il mondo.

## LA NOSTRA MISSIONE: ESSERE SEMPRE AL TUO FIANCO

I nostri clienti ci riconoscono per la qualità e la costanza delle prestazioni dei nostri utensili.

Questo riconoscimento è frutto di un percorso che ci vede impegnati da oltre 50 anni nella ricerca di soluzioni tecniche avanzate per elaborare prodotti innovativi e performanti.

Più che fornitori ci piace definirci partner, parte attiva nel processo produttivo del cliente.

Accompagniamo il cliente nell'applicazione, per aiutarlo nella definizione dell'utensile più adatto alle sue esigenze. L'obiettivo è ottenere la migliore soluzione possibile per la gestione del processo produttivo del cliente.

*VINCENT has been a leading manufacturer of diamond tools since 1974: tools that are used for cutting and grinding, as well as polishing natural stone, quartz agglomerate, glass and ceramic tiles. Our organization, which includes production sites in Italy and Asia, currently counts over 300 highly qualified employees and a sales force present in over 70 countries, serving more than 1400 customers around the world.*

## OUR MISSION: TO ALWAYS BE AT YOUR SIDE

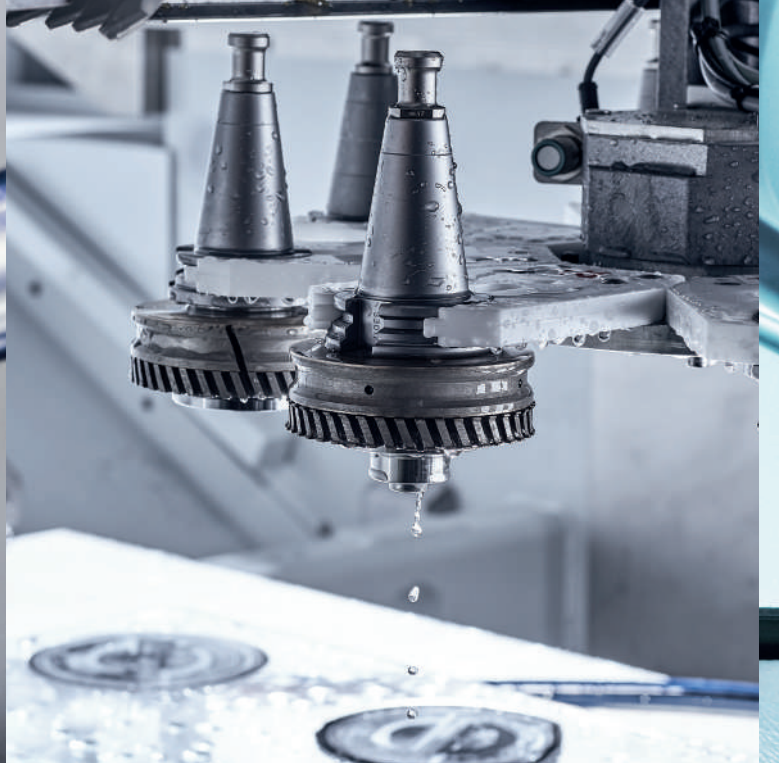
*Our customers value us for the quality and consistency in the performance of our tools.*

*This recognition is thanks to our quest over the past 50 years to find advanced technical solutions to develop innovative and performance geared products.*

*More than just a supplier, we like to distinguish ourselves as partners, an active part of our clients' production process. We work together with our customers to apply and help define the tool most suited to their needs. The goal is to get the best possible solution to manage the customer's entire production process.*

[www.vincent.it](http://www.vincent.it)







# INDEX

Competence e Experience pag. 08

Milestones for glass industry pag. 09

Automotive & Technical Glass pag. 11

Flat Glass pag. 19

CNC Tooling pag. 23

Cutting & De-coating pag. 29

Optics pag. 33



 SURFACES GROUP

YOUR PARTNER IN **STONE INDUSTRY**

## COMPETENCE & EXPERIENCE

### COMPETENCE & EXPERIENCE

#### PROFESSIONAL PARTNER ON EQUAL TERMS

VINCENT has been a leading manufacturer of diamond tools since 1974: tools that are used for cutting and grinding, as well as polishing natural stone, quartz agglomerate, glass and ceramic tiles. Our organization, which includes

production sites in Italy and Asia, currently counts over 300 highly qualified employees and a sales force present in over 70 countries, serving more than 1400 customers around the world.

#### OUR MISSION: TO ALWAYS BE AT YOUR SIDE

Our customers value us for the quality and consistency in the performance of our tools. This recognition is thanks to our quest over the past 50 years to find advanced technical solutions to develop innovative and performance geared products. More than just a supplier, we like to distinguish

ourselves as partners, an active part of our clients' production process. We work together with our customers to apply and help define the tool most suited to their needs. The goal is to get the best possible solution to manage the customer's entire production process.

### A GLOBAL PARTNER FOR ALL APPLICATIONS IN THE GLASS INDUSTRY







YOUR PARTNER IN **STONE INDUSTRY**

## MILESTONES FOR GLASS INDUSTRY

# MILESTONES FOR GLASS INDUSTRY

Innovation leadership can only be achieved by constantly coming up with something new that serves the whole branch. In Glass Industry VINCENT plays an active role

in developing innovation and the impressive milestones show it in the daily work of the customers all over the world.



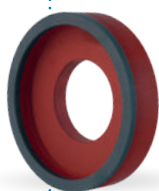
### 1979

VINCENT is leader supplier of polishing plateau for glass.



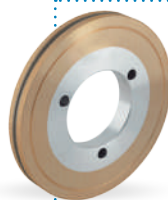
### 1992

VINCENT develops breakwater system for straight bevelling machines.



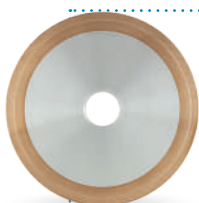
### 2002

VINCENT introduces long life resin cup wheels.



### 1992

VINCENT develops breakwater system for straight bevelling machines.



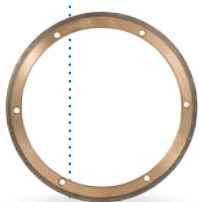
### 2013

VINCENT presents high speed peripheral wheels for solar glass.



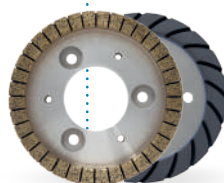
### 2014

VINCENT introduces the first single-use automotive wheel: HALO.



### 2017

VINCENT creates a new peripheral wheel named HYLAS.



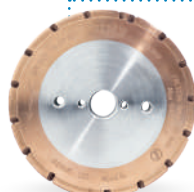
### 2018

VINCENT presents STARFLEX the universal set of metal and resin cup wheels for flat edge processing of float and laminated glass.



### 2019

VINCENT introduces SAVA-ACTIVE abrasive sticks for dressing grinding wheels in the automotive glass industry.




### 2020

VINCENT creates REVERSE segmented and slotted wheels for laminated glass grinding.







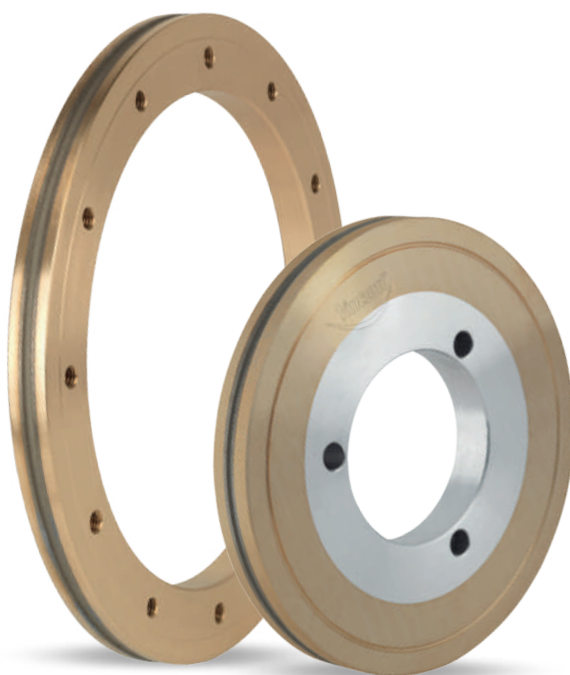


# **AUTOMOTIVE & TECHNICAL GLASS**

## HIGH SPEED GRINDING WHEEL

By using its extensive experience, VINCENT has become a worldwide trusted partner in the grinding of glass for automotive. Thanks to continuous technological developments and the wealth of process know-how, VINCENT is able to provide sustained solutions in line

with the customers demanding, technical and economic expectations. The special bonds guarantee an excellent lifetime working at very high speed and allow to re-profile the wheels several times.



### PLUS

#### HIGH WORKING SPEED

VINCENT grinding wheels excel in high-speed applications (up to 40m/minute in laminated applications & up to 30m / minute tempered) ensuring the highest standards of quality and lifetime in the market.

#### WIDE RANGE OF ACHIEVABLE PROFILES

tools are prepared by standard or customized profiles, designed to improve production cycles. The wide assortment includes special and asymmetric profiles for processing sunroofs, windshields, backlites, laminated sidelites and thin glass.

#### EXCELLENT LIFETIME

the grinding wheels, provided with high diamond thickness and specifications designed for different processes / applications / operating parameters, allow to obtain the best performance and ensure the repeatability for all subsequent use.

#### IMMEDIATE START-UP TIME

bonds properly well researched and perfect preparation of the diamond surface guarantee an excellent edge finish from the first piece, reaching the maximum processing speed just after a few pieces from start up.

#### LIGHT WEIGHT

the grinding wheel bodies are mostly made of bronze and aluminum. Bronze inhibits the rust formation on tool holder cones, and bodies produced in this way, lighten the weight of tools and make easier to work on electro-spindle bearings.





YOUR PARTNER IN **STONE INDUSTRY**

## AUTOMOTIVE & TECHNICAL GLASS

### HALO

With the HALO product line, VINCENT defines a new concept for edge grinding of automotive glass. As well as high process speed, low dressing frequency and a clean edge, the design

of a single use wheel offers several new advantages and added value compared to a standard repeatedly reprofiled wheel.

#### Application

Edge grinding of windshields, side windows, laminated side windows, backlites and sunroofs.



### PLUS

#### MINIMUM STARTUP TIME

specific alloys grant a perfect edge finish from the first piece and maximum speed can be reached after few pieces.

#### INCREASED PRODUCTIVITY

thanks to a reduced set up time and to the possibility to install more wheels on the same cone, HALO allows to work continuously. VINCENT also guarantees dimensional tolerances from the very first piece produced.

#### MACHINE SET UP MINIMIZED

because only new wheels with precise geometry are used, the machine setting and working parameters are always the same.

#### ECONOMIC ADVANTAGES

minimized investment in new wheels; significant reduction of handling/logistic efforts and reduced spindle maintenance due to a lighter wheel that reduce vibrations during work.

#### EASY INSTALLATION

in few seconds and proper positioning are granted by specifically designed cones and adaptors.

## SAVA-ACTIVE DRESSING STICKS FOR AUTOMOTIVE GLASS GRINDING WHEELS

The innovative VINCENT abrasive stick has been designed to obtain improved quality and efficiency in the performances of diamond wheels in grinding glasses for Automotive glass industry.



### PLUS

#### IMPROVEMENT OF DIAMOND TOOL LIFE UP TO 40%

thanks to the grinding action of the colored part of sticks, diamond wheels maintain a more regular profile shape for a longer time. This action delays the gradual deformation of the profile edge.

#### IMPROVED QUALITY AND FINISHING OF THE GLASS EDGE

the regular use of the colored section of the stick avoids excessive exposure of the diamond present in the tools. This creates the optimal conditions for a correct removal of glass and an adequate working pressure, with consequent general improvement of the edge quality.

#### INCREASED PRODUCTIVITY / REDUCTION OF SCRAP

at the same working conditions, with the use of SAVA-active there is a 50% reduction in micro-splinter scrap (usually due to excessive exposure of the diamond during processing). Moreover, with SAVA-Active the overgrinding effect caused by progressive deformation of profile is avoided. finish from the first piece, reaching the maximum processing speed just after a few pieces from start up.

## DIAMOND DRILLS FOR AUTOMOTIVE INDUSTRY

VINCENT provides a wide range of monobloc drills and drills with mobile countersinks for the Automotive Glass Industry. They are specially designed and manufactured to guarantee the best quality of the hole at high feed rates.



### PLUS

#### EXCELLENT STARTUP

from the first hole you get an excellent edge quality. To speed up the startup, VINCENT provides the drills with properly dressed diamond surface.

#### HIGH FEED SPEED

the diamond drills have been designed for a consistent performance throughout their lifetime: the high edge quality is guaranteed up to 120 mm/min working.

#### EXCELLENT EDGE FINISHING

the diamond drills allow you to achieve excellent quality standards, ensuring a perfect finishing.

#### LONG LIFETIME

the sintered diamond drills are manufactured using specific bonds to grant an excellent lifetime, that satisfies the highest standards in the market.



YOUR PARTNER IN **STONE INDUSTRY**

## AUTOMOTIVE & TECHNICAL GLASS

### XTREME SCM BELTS

The new XTREME SCM BELT has been designed to improve finishing quality, increase lifetime and reduce the noise in PVB removal dry process for automotive glass industry.



### PLUS

#### HIGH CUTTING CAPACITY

the new SCM BELT is produced using a special non-woven fiber impregnated with silicon carbide that grants a very high cutting capacity and that ensures a complete removal of exceeding PVB.

#### CONSISTENT QUALITY

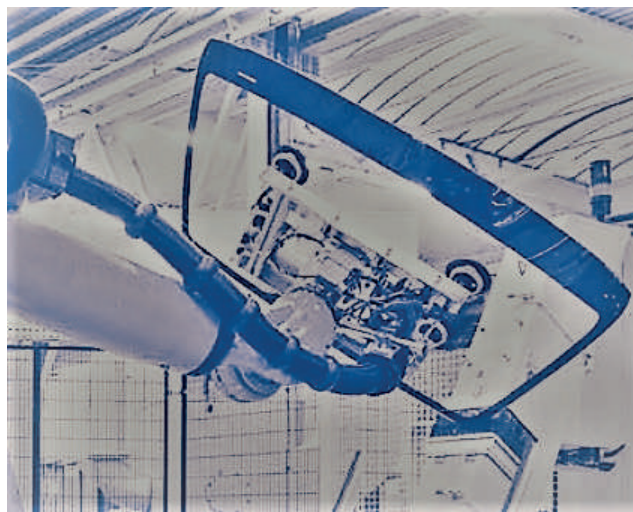
the perfect distribution of silicon carbide together with the perfect elasticity of the base cloth gives XTREME SCM BELT a very high and consistent quality during all its lifetime.

#### NOISE REDUCTION

the innovative high quality materials used to produce XTREME SCM BELT make it less noisy than standard products on the market.

#### LONG LIFE

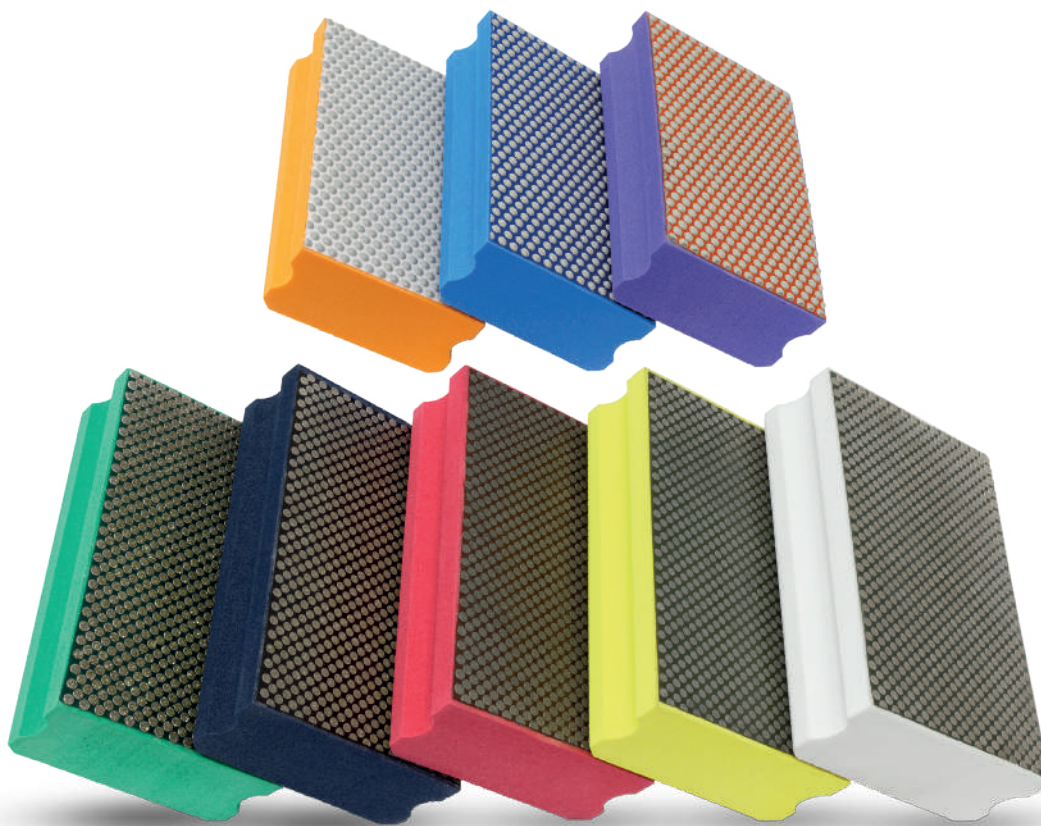
thanks to the special cloth used, the new XTREME SCM BELT maintains the same tensioning for all its lifetime, this grants an homogeneous SCM consumption and make it possible to use the belt until the end of abrasive thickness.



Application PVB removal dry process  
for automotive glass industry

## HANDPADS

VINCENT diamond handpads guarantee a very quick, economic and high-quality finish on flat and shaped surfaces either on GLASS, CERAMIC and STONE.



## PLUS

### HIGH QUALITY BACKING MATERIAL

the backing material on VINCENT handpads has an optimized rigidity compared to the other products on the market. This reduces its deformation thus preventing from damaging the upper and lower surfaces of the slab when working the edge.

### INCREASED TOOL LIFE

thanks to the premium materials used and the attention to details, VINCENT handpads have a longer life than almost all similar products on the market.

### EASY TO USE ON ANY APPLICATION AND MATERIAL

VINCENT handpads can be used by anyone and can be easily used for multiple purposes on any material, from stone to glass to ceramics.

### IMPROVED FINISH QUALITY

thanks to an innovative diamond pattern and optimized diamond fixing, VINCENT handpads guarantee an excellent surface finish.





YOUR PARTNER IN **STONE INDUSTRY**

## AUTOMOTIVE & TECHNICAL GLASS

### HYLAS

With HYLAS, VINCENT introduces a new line of wheels for grinding furniture and technical glass.

The most significant benefits are: fast startup, high speed, excellent quality finishing as well as extreme flexibility of use.

HYLAS allows the same wheel to be installed on different double edging machines, regardless of the type of machine fitting, thanks to the simple use of suitable adaptors.

HYLAS has also been designed to never need reprofiling and thus offers the advantage of working always with a new grinding wheel.



### PLUS

#### FAST STARTUP

specific bonds and accurate preparation of the diamond surface guarantee excellent edge quality already from the first piece

#### MAXIMUM PERFORMANCE

the installation of only new grinding wheels with the maximum diameter grants always the best performance, ensuring perfect refrigeration, high speed, long life of the wheel and the excellent quality of the edge.

#### MACHINE SET UP MINIMIZED

thanks to specially designed adaptors, the installation is easy and fast. Because only new wheels with precise geometry are used, tool positioning and machine setting remain always unchanged.

#### INCREASED PRODUCTIVITY

thanks to reduced installation time, fast start-up, high speed and durability, you get the highest productivity.

#### ECONOMIC ADVANTAGE

minimum investments in new wheels and cost saving in tool reprofiling, service and logistics.









# FLAT GLASS

## FLAT GLASS

### STARFLEX

Universal set of metal and resin grinding cups for flat edge processing of float and laminated glass. Focused on process efficiency and flexibility, VINCENT provides STARFLEX. This is a set of flat edge grinding diamond wheels, specifically designed to ensure outstanding edge finishing and performance on all glasses, ranging from 3 mm mirror glass to thick glass, or even laminated glass, using always the same tools.



### PLUS

#### HIGH SPEED

the focus is the efficiency of whole machine. The specifically developed bonds and geometry and the perfect match of the metal and resin wheels allow excellent removal capacity at high speed.

#### FLEXIBILITY

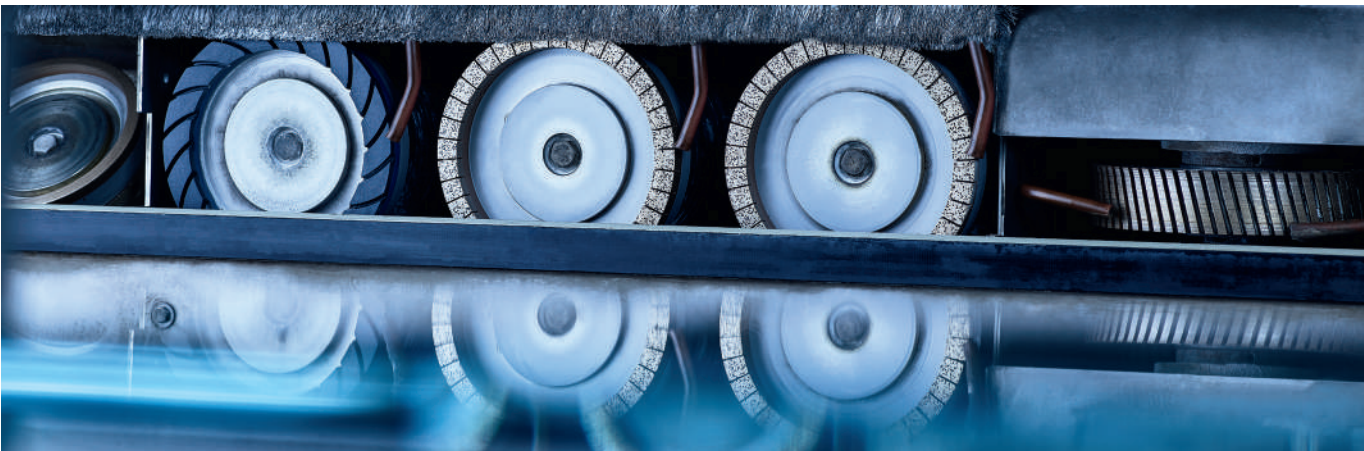
STARFLEX setup, composed by the slotted metal and resin grinding wheels, ensures optimal performance on all glasses. The sequence of two metal wheels followed by one resin wheel is the best technical solution for flat edge processing.

#### LONG LIFETIME

STARFLEX setup properly divides the removal rate between the different wheels to ensure the consistent consumption and the best efficiency of the tools.

#### OPTIMIZED EDGE FINISHING

the combination of geometry and bond of STARFLEX allows the optimal flat edge finishing, preparing all glasses for final polishing.



Application Edge grinding of all glasses, ranging from 3 mm mirror glass to thick glass, or even laminated glass





YOUR PARTNER IN **STONE INDUSTRY**

**FLAT GLASS**

## CERIUM POLISHING CUP WHEEL

Through the new line of CERIUM cups, VINCENT provides a great solution for the last steps in flat glass processing. With this product VINCENT offers to the market a tool that combines high performances and high quality with a proper cost benefit.



### PLUS

#### IMMEDIATE STARTUP

CERIUM tools grant an excellent finishing from the very first piece up to the whole tool life. This is possible due to the homogeneous adhesion to the glass edge achieved by the perfect balance and parallelism of the tool.

#### HIGH PERFORMANCE

CERIUM cups can be used at very low pressure and high speed and still grant a perfect edge surface quality.

#### EXCELLENT FINISH

The new specification grants an excellent polishing quality that reduces roughness ( $R_a = 0.05$ ) of the edge to a very close level to the glass surface.

#### HIGH PRODUCTIVITY

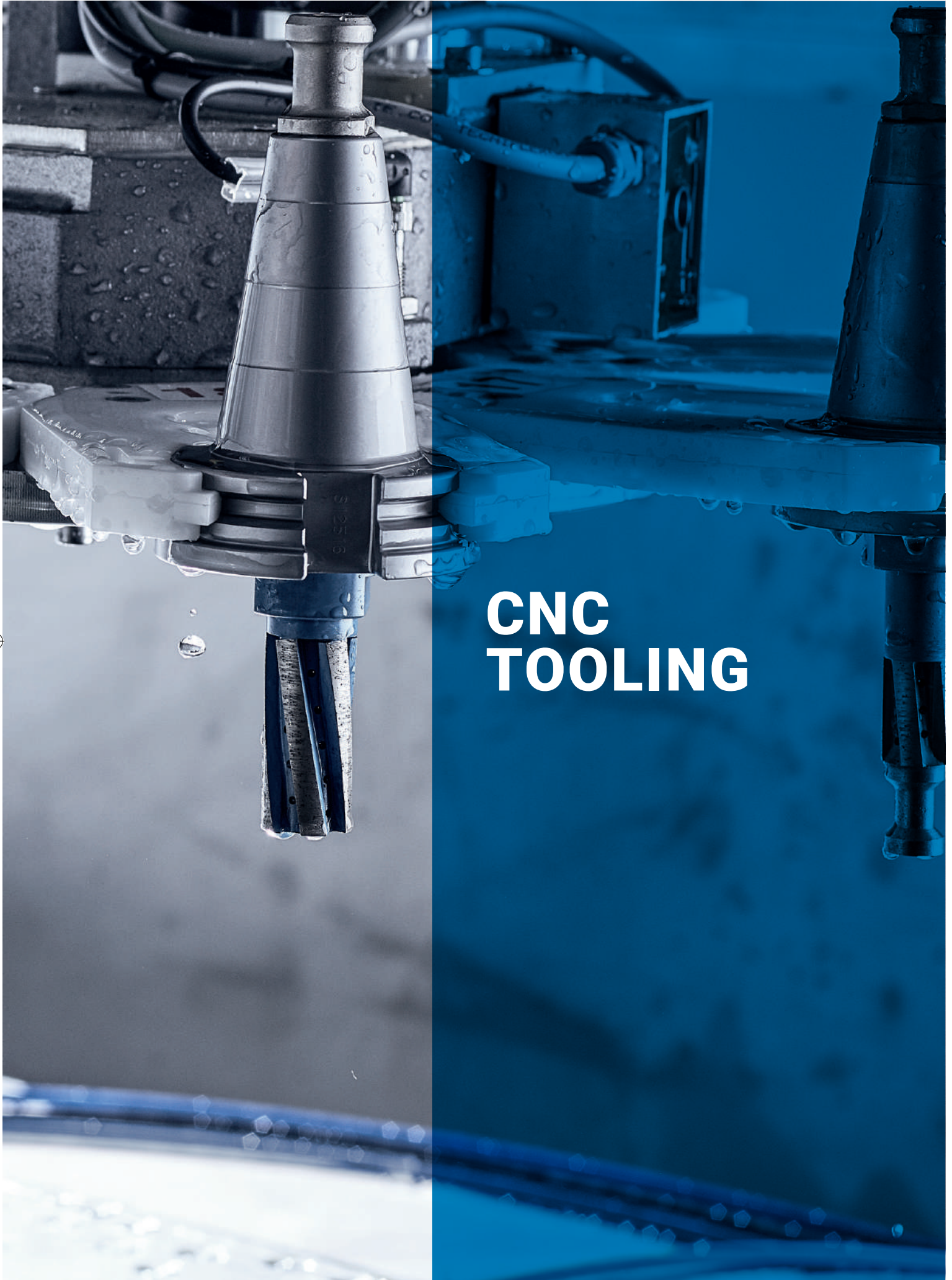
The high quality materials used to produce this tool, guarantee a lifetime above current market standards.



Application Float and laminated glass processed on straight line double edging machines







# CNC TOOLING





## CNC TOOLING

### CNC WHEELS

Metal bond tools, with segmented and continuous rim for different applications and work sequences in horizontal and vertical CNC machines. The wheels are available in various diameters from 25 to 200mm for both float and laminated glass in all thicknesses.



#### PLUS

##### HIGH STOCK REMOVAL RATE

Thanks to the developed combination of grits and bonds, these tools are able to work in every working condition and always grant an high stock removal rate.

##### HIGH

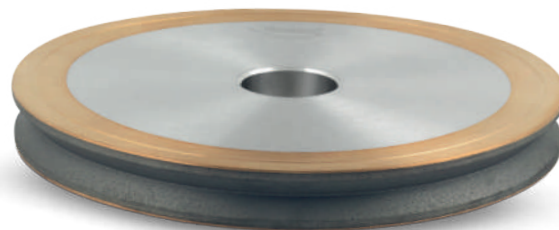
The tools are able to reach speed rate over standard on all glass thicknesses.

##### LONG LIFETIME

Thanks to the technical features of the products, the tools achieve a great benefit in terms of duration.

### CNC ARRIS WHEELS

Metal bond V-shape tool designed for double glazing processing on vertical CNC machines.



#### PLUS

##### OUTSTANDING QUALITY

During all their lifetime, VINCENT Arris wheels grant an outstanding finishing quality that is extremely important for all the next processing phases.

##### HIGH SPEED

VINCENT is the world leader in this application. These tools grant a processing speed above the market standards.

##### LONG LIFETIME

Although working at high speeds and always ensuring perfect quality standards, the tool guarantees an excellent lifetime.



## REVERSE

REVERSE wheels have been designed to improve the productivity of machinery for processing of laminated glass for architectural and structural facades. Segmented and slotted REVERSE wheels are used to grind laminated glass in all the various construction and furniture applications.



## PLUS

### IMPROVEMENT OF DIAMOND TOOL LIFE UP TO 30%

By using REVERSE tools, the removal of plastic shards after grinding is easy and effective. This reduces frictions while grinding and prevents deformation and wear of diamond wheels.

### ENHANCED EDGE FINISHING QUALITY

Through a regular and effective removal of plastic shards, the diamond band is always free of process waste and can work with no overheat. This ensures enhanced finishing quality of the edge.

### INCREASED WORKING SPEED

The new REVERSE wheels allow a 20% faster working speed compared to standard ones.

### FRAGMENTATION OF PLASTIC WASTE

REVERSE tools ensure a fragmentation of plastic waste into small shards that can easily drain away from the grinding area. This avoids machine stops and re-setting during process. Moreover it solves the problem of scheduled cleaning cycles to remove plastic waste.

### COMPLETE RANGE OF WHEELS GEOMETRIES AND THICKNESSES

VINCENT offers a wide range of REVERSE products that suit any production requirements and any different working conditions.



without REVERSE



with REVERSE

## CNC TOOLING

### MILLING CUTTERS AND COMBINED ROUTERS

Metal bond tools, with segmented and continuous rim for different applications and work sequences in horizontal and vertical CNC machines. The wheels are available in various diameters from 25 to 200mm for both float and laminated glass in all thicknesses.



#### PLUS

##### LONG LIFETIME

thanks to an excellent homogeneity in consumption during use and stability of the product, the best yields are guaranteed both with the milling cutter and with the combined - which is designed to align the wear of the router with the underlying profile.

##### NOISELESS

these grinding tools produce significantly less noise compared to the other tools on the market.

##### IMMEDIATE STARTUP

VINCENT production pays extreme attention to the dressing of the tools, this leads to an immediate startup of VINCENT cutters and combined routers.

##### HIGH PRODUCTIVITY

high removal and excellent finishing are always granted. For this reason, by using VINCENT tools, the cycle times are always optimized compared to the standard.

### CORE DRILLS

VINCENT offers optimum solutions for the drilling of holes with perfect edges - even at high drilling speeds, right from the very first hole.

The company's long-standing experience and expertise in the development of diamond tools for drilling applications as well as the use of highly-developed manufacturing technologies ensure the best results.



#### PLUS

##### EXCELLENT START UP

from the first hole you get an excellent edge quality. To speed up the startup, VINCENT provides the drills with properly dressed diamond surface.

##### HIGH FEED SPEED

the diamond drills have been designed for a consistent performance throughout their lifetime: the high edge quality is guaranteed up to 120 mm/min working.

##### EXCELLENT EDGE FINISHING

the diamond drills allow you to achieve excellent quality standards, ensuring a perfect finishing for both surfaces.

##### LONG LIFETIME

sintered diamond drills are manufactured using specific bonds to grant an excellent lifetime, that satisfies the highest standards in the market.





YOUR PARTNER IN **STONE INDUSTRY**

**CNC TOOLING**

## REX, SURFACE AND ARRIS POLISHING WHEELS

Polishing cups for flat edge and bevels for straight line and double edging machines in the glass industry.

With these new products VINCENT completes its range of tools for glass processing on straight line and double edging machines.



### PLUS

#### **ADAPTABILITY TO THE WORKING SURFACE**

The combination of specification and manufacturing care allows a perfect coupling to the glass surface and excellent working performance from the very first processed piece.

#### **EXCELLENT FINISHING**

The REX polisher - optimized for straight lines - and the SURFACE polisher - optimized for double edgers - are able to provide extraordinary finishing results in all working conditions. Furthermore, when used in combination with VINCENT Cerium wheels, they allow to achieve a super bright gloss.

#### **HIGH PRODUCTIVITY**

VINCENT polishing cups are made with geometries suitable for all types of processing (both on float and laminated glass), and guarantee excellent mechanical strength. The innovative shape of the slots eliminates smudging on thick laminated glasses and allows excellent working continuity on thin float glasses.

This results in a considerable increase in productivity.

#### **WHEELS AVAILABLE FOR ALL MACHINE MODELS**

VINCENT polishing products, which range includes Arris polishing wheels (named ARRIS), are available with different attachments and sizes to fit all machines available on the market.







# CUTTING & DE-COATING





## ELASTIC WHEELS

VINCENT provides the best solutions for removing all kinds of metal coatings from glass using portable grinders as well as vertical stationary and bridge machines.



### PLUS

#### **COMPLETE REMOVAL OF GLASS PROTECTION**

allowed by the built-in damping properties.

#### **CENTRE REINFORCED**

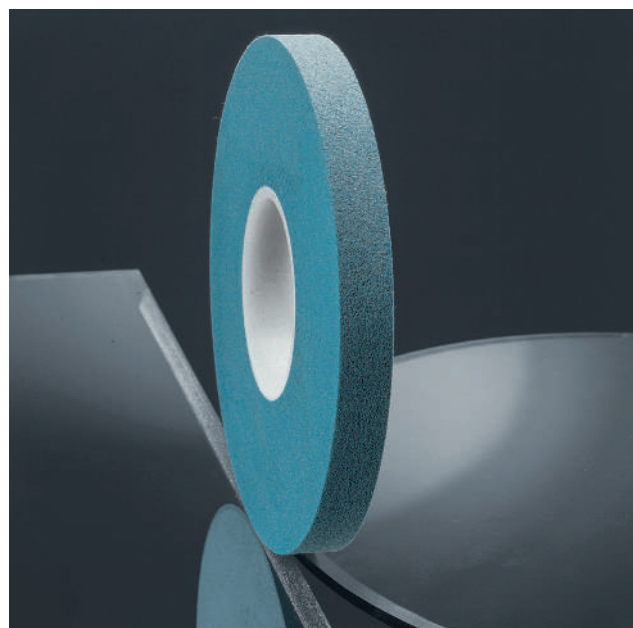
the reinforced hole of the wheel allows a longer duration and grants to be used in all working conditions.

#### **FOR WET AND DRY APPLICATIONS**

the special development of this wheel allows both wet and dry use.

#### **NEW FORMULATION**

developed to remove any hard coating in combination with any scratch-resistant protective in just one pass (i.e. Easypro, SunGuard, others).



Application Grinding tools for low-e glass decoating



YOUR PARTNER IN **STONE INDUSTRY**

**CUTTING & DE-COATING**

## TURBO SAW BLADES

VINCENT diamond saw blades provide the ideal solution for cutting laminated glass. Available in 300, 350 and 400 mm diameters.



Application Diamond Saw  
Blades for cutting Safety Glass.

### PLUS

#### **FAST CUTTING AND LONG LIFETIME**

due to the perfect combination of first quality diamond and new generation bond type, VINCENT Turbo saw blades reach outstanding performances.

#### **CLEAN CUTTING EDGES**

turbo segment design includes specific slots that allow an easy elimination of plastic and grant a cut homogeneous, clean and without defects.

#### **NOISELESS CUT**

thanks to special "sandwich" core, the blade cut perfectly straight and noiselessly, ensuring an homogeneous consumption of the segments during processing.











**OPTICS**

## **CURVE GENERATING AND LAPPING TOOLS, LENS EDGING WHEELS**

Generating tools, diamond pellets and full face tools for the production of ophthalmic lenses. Diamond wheels for edging of ophthalmic lenses with manual, automatic and high-production CNC machines.



### **PLUS**

#### **CURVE GENERATING**

high-performance diamond crown wheels and peripheral wheels for curve generators. Despite the high processing speed, the surface quality is ideal for obtaining short fining times.

#### **LAPPING TOOLS**

diamond pellets in various grit sizes for fining, re-grinding or backside clearing of lenses, moulds or glass for other specific applications. Full face tools for re-grinding, fining or chamfering.

#### **LENS EDGING WHEELS**

the ideal specification for each application on hand edgers, CNC edging machines or industrial edgers, which allow for best results regarding cutting speed, edge quality and luster of polish.



Application Curve generating and lapping tools, lens edging wheels



# CATALOGUE

## GENERAL INFORMATION

The tools shown in this catalogue, the information regarding delivery, appearance, performance and dimensions shall comply with the according status at the time of printing. We develop our products continuously. We reserve the right to change without prior notice. All errors and misprints reserved. Reprinting as well as any kind of reproduction - even partially - is not permitted without the written permission of VINCENT S.r.l., 36016 Thiene/Italy.

A detailed version of our terms and conditions can be found at [www.vincent.it](http://www.vincent.it)







CERAMICS | GLASS | NATURAL STONE | ENGINEERED STONE | STONE FABRICATORS | MECHANICS



[www.surfaces-group.it](http://www.surfaces-group.it)

**VINCENT SRL a socio unico**

Via dell'Elettronica, 6 | 36016 THIENE (VI) | Italy

Tel: +390445359911 Fax: +39 0445 370842

E-mail: [info@vincent.tools.it](mailto:info@vincent.tools.it) | Web: [www.vincent.it](http://www.vincent.it)