

EXTERNAL GRINDING

CYLINDRICAL AND SURFACE GRINDING

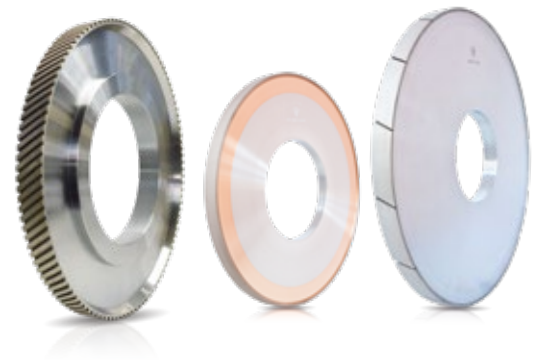
Description

Shape 1A1

Available in metal, resin and vitrified bond. Various configurations available: with segments, continuous rim with and without slots.

Standard diameters

125 mm | 150 mm
175 mm | 200 mm
250 mm | 300 mm
350 mm | 400 mm
450 mm | 500 mm
600 mm | 700 mm
1.000 mm



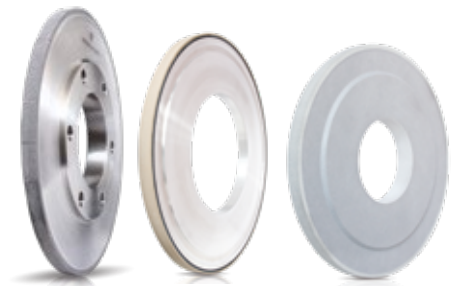
Description

Shape 3A1 | 9A1 | 14A1

Available in metal, resin and vitrified bond. Various configurations available: with segments, continuous rim with and without slots.

Standard diameters

125 mm | 150 mm
175 mm | 200 mm
250 mm | 300 mm
350 mm | 400 mm
450 mm | 500 mm
600 mm | 700 mm
1.000 mm



INTERNAL GRINDING

Description

Shape 1A1

Available in metal, resin, vitrified, vacuum-brazed and electroplated bond.



INTERNAL GRINDING

Description Shape 1A1W

Grinding pins available in metal, resin, vitrified, vacuum-brazed and electroplated bond.



CENTERLESS GRINDING

METAL BONDED CENTERLESS WHEEL

Description

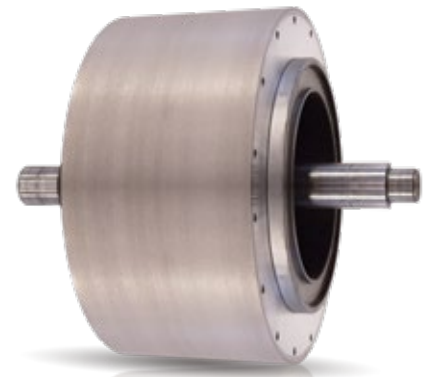
Metal bonded wheels available in continuous rim with and without slots.

Standard diameters

150 mm | 200 mm
300 mm | 350 mm
400 mm | 500 mm
600 mm

Machines

Agathon, Cincinnati, Estarta, Garboli, Ghiringhelli, Herminghausen, Kellenberger, Lidköping, Monzese, Nomoco, PeTeWe ed altre



RESIN BONDED CENTERLESS WHEEL

Description

Resin bonded wheels available in continuous rim with and without slots.

Standard diameters

150 mm | 200 mm
300 mm | 350 mm
400 mm | 500 mm
600 mm

Machines

Agathon, Cincinnati, Estarta, Garboli, Ghiringhelli, Herminghausen, Kellenberger, Lidköping, Monzese, Nomoco, PeTeWe ed altre



CENTERLESS GRINDING

VITRIFIED BONDED CENTERLESS WHEEL

Description

Vitrified bonded wheels available in continuous rim with and without slots.

Standard diameters

150 mm | 200 mm
300 mm | 350 mm
400 mm | 500 mm
600 mm

Machines

Agathon, Cincinnati, Estarta, Garboli, Ghiringhelli, Herminghausen, Kellenberger, Monzesi, Lidköping, Nomoco, PeTeWe ed altre



SINGLE AND DOUBLE DISC GRINDING

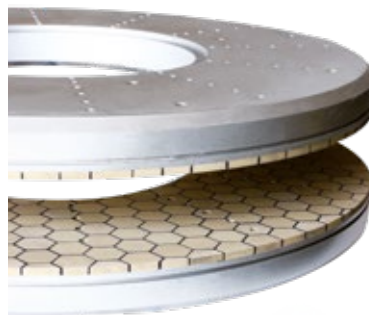
Description

Available in metal, resin, vitrified. Various geometries available.

Standard diameters

300 mm | 350 mm | 450 mm
457 mm | 500 mm | 503 mm
8 mm | 534 mm | 600 mm
710 mm | 720 mm | 750 mm
810 mm | 1.020 mm | 1.050 mm

Diskus, Famtec (Abplanalp), Giustina, Kehren, Melchiorre, Müller, Peter Wolters, Stähli, Supfina, Viotto, Wendt ed altre



PROFILING

GRINDING OF TUNGSTEN CARBIDE RINGS

Description

Metal bonded wheels with profiles upon request.

Standard diameters

100 mm | 200 mm
300 mm | 350 mm



GRINDING OF CONVENTIONAL ABRASIVE WHEELS

Description

Sintered metal wheels for turning and grinding operations of conventional abrasive wheels

Standard diameters

Dal 20 mm
al 500 mm



GRINDING OF ABRASIVE BELTS

Description

Shape 6A9

Grinding of abrasive belts with cloth or paper base with different abrasives including Silicon Carbide | Aluminium Oxide (Corundum) | Zirconium Oxide.

Standard diameters

75 mm
100 mm
120 mm



DRESSING AND REPROFILING

Description

Rollers available in sintered metal and electroplated bond for the dressing and reprofiling of conventional abrasive and vitrified bonded wheels.

Standard diameters

100 mm | 200 mm
300 mm | 350 mm



DRESSING

Description

- Single point diamond dressers
- Dressing rollers
- Impregnated diamond dressers
- Dressing plates
- Sintered metal dressers



Description

- Abrasive sticks
- Rubber sticks

